

Louisville Metro Government Office of Sustainability

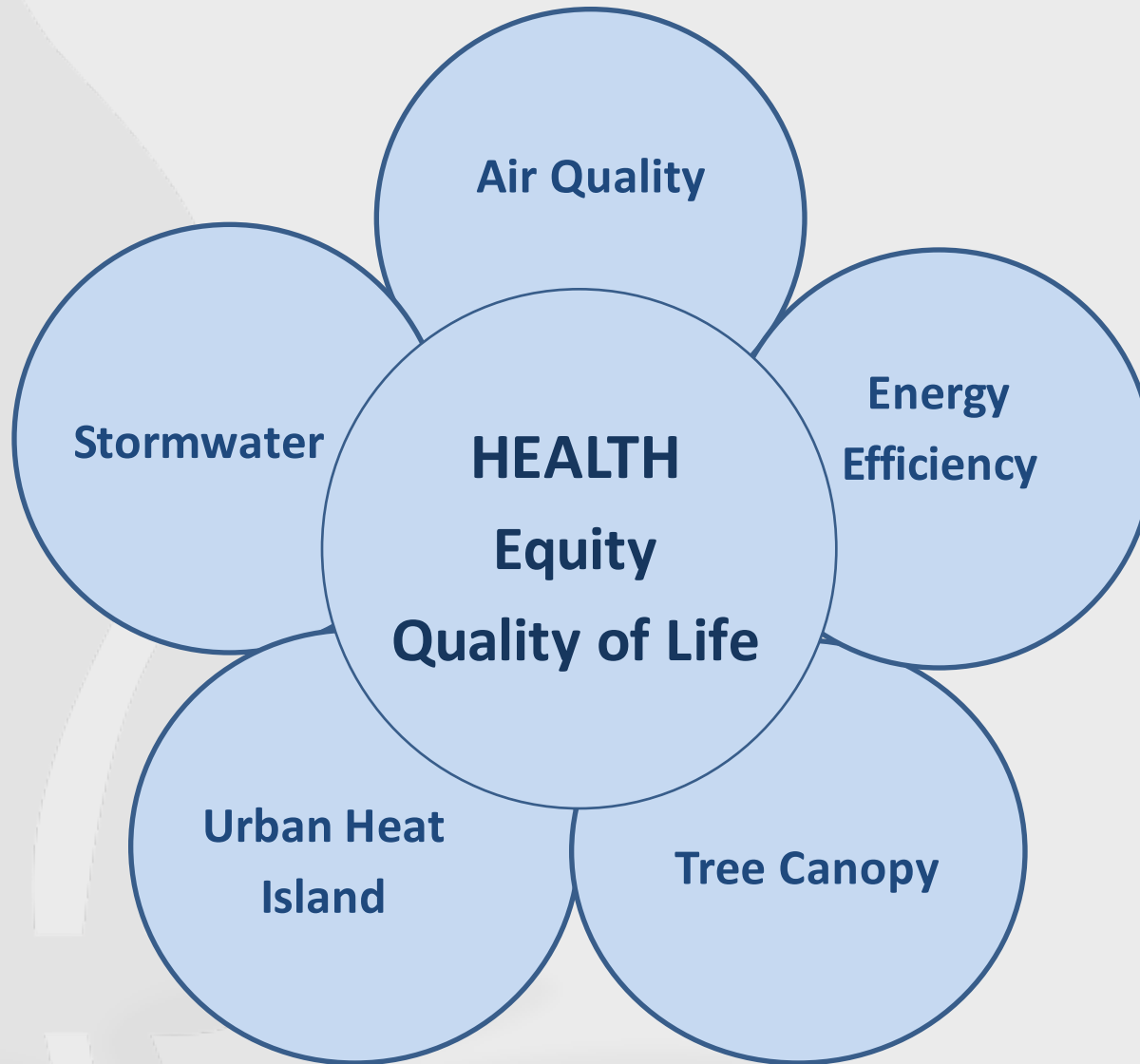
New Partners for Smart Growth

Maria Koetter
Director, Office of Sustainability
February 3, 2017

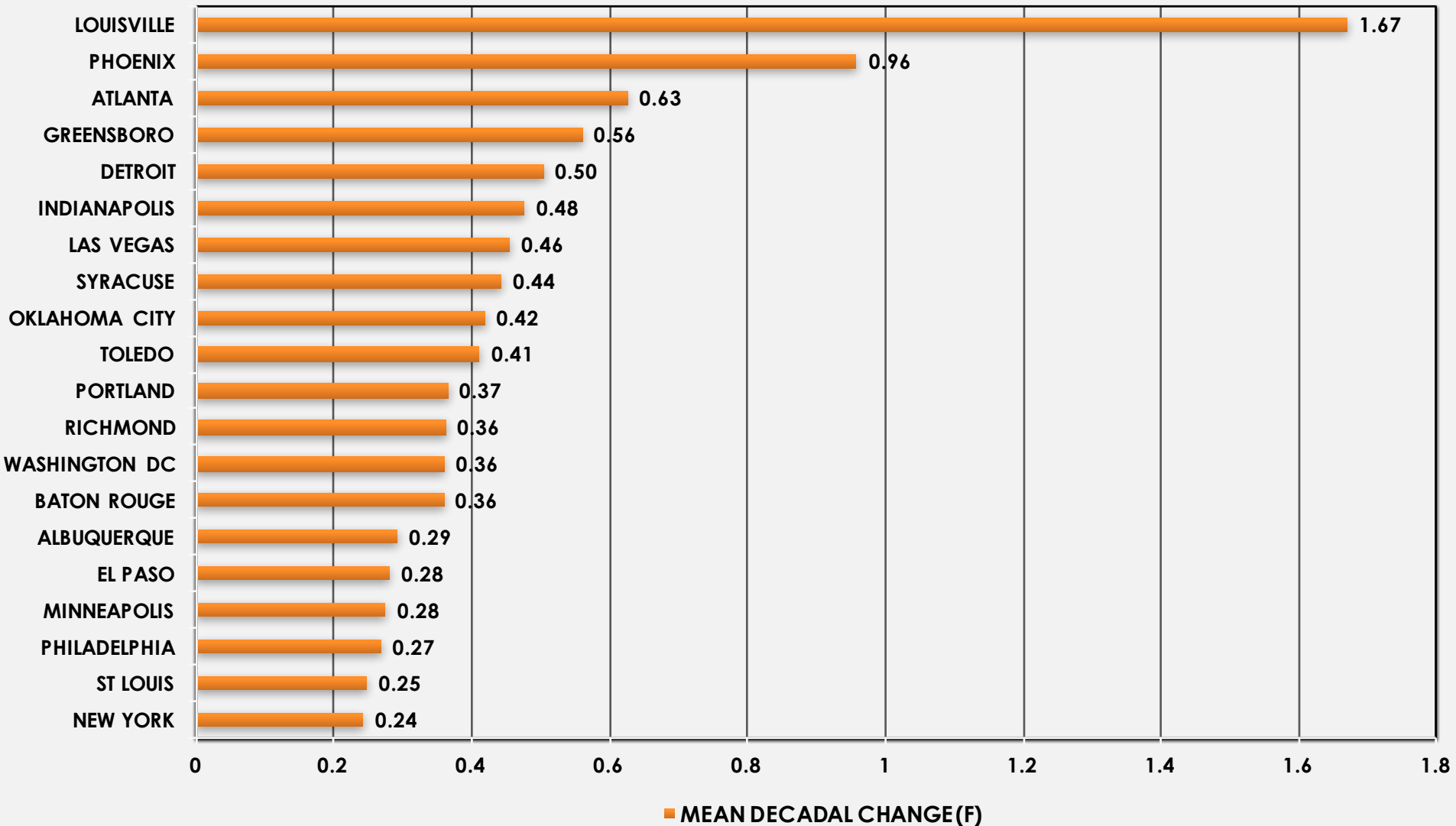


OFFICE OF
SUSTAINABILITY
A DIVISION OF DEVELOP LOUISVILLE

Sustain Louisville – Health, Equity, Resilience

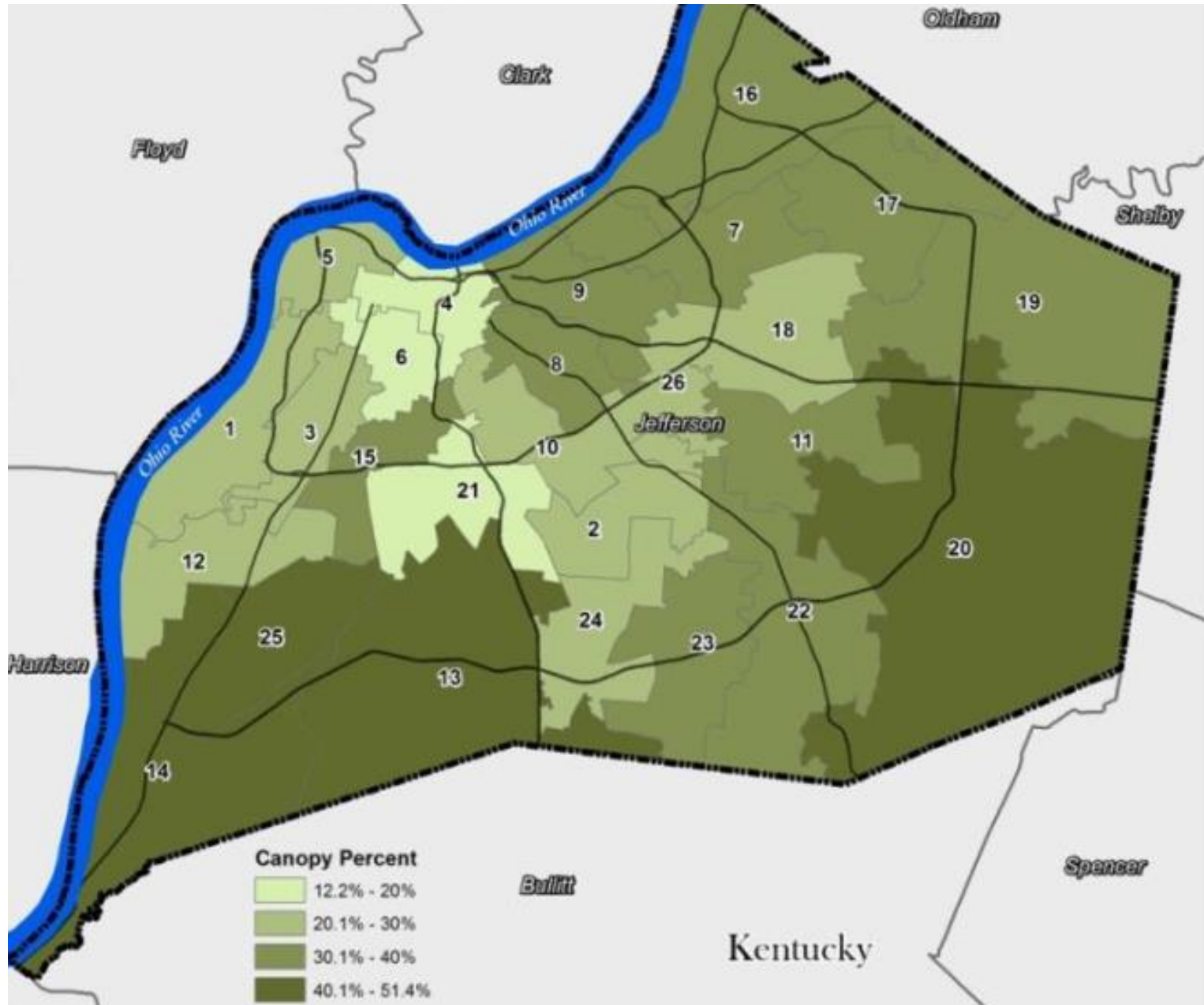


TOP 20 MOST RAPIDLY GROWING URBAN HEAT ISLANDS IN UNITED STATES: 1961-2010



SOURCE: URBAN CLIMATE LAB, GEORGIA INSTITUTE OF TECHNOLOGY

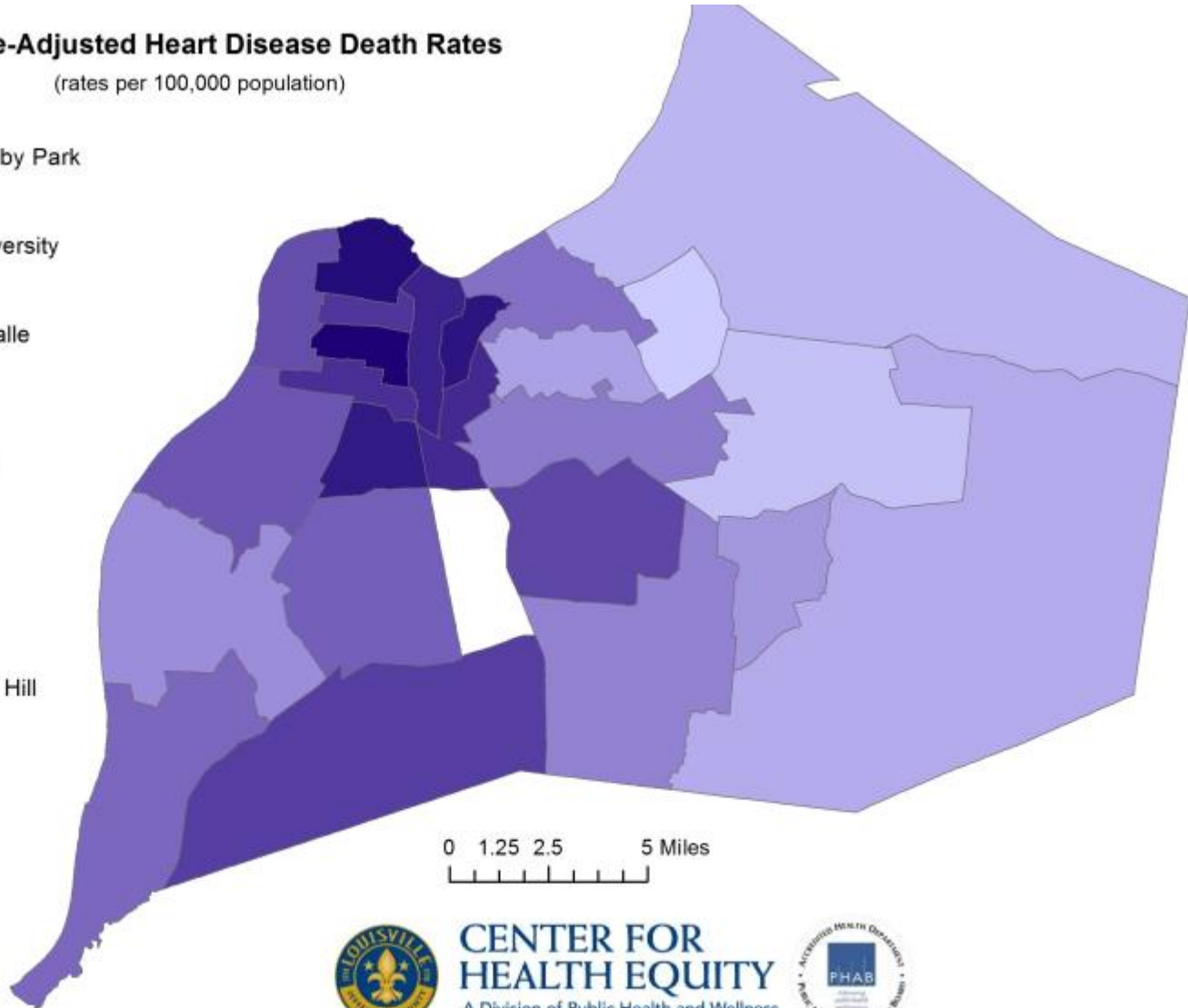
Tree Canopy Coverage



Mortality from Heart Disease

Age-Adjusted Heart Disease Death Rates
(rates per 100,000 population)

- 341, California-Parkland
- 327, Portland
- 303, Phoenix Hill-Smocketown-Shelby Park
- 296, South Central Louisville
- 287, Downtown-Old Louisville-University
- 285, Germantown
- 264, Algonquin-Park Hill-Park Duvalle
- 253, Russell
- 247, Fairdale
- 229, Buechel-Newburg-Indian Trail
- 228, Chickasaw-Shawnee
- 224, Shively
- 212, South Louisville
- 210, Valley Station
- 192, Butchertown-Clifton-Crescent Hill
- 180, Southeast Louisville
- 178, Highview-Okolona
- 178, Pleasure Ridge Park
- 137, Fern Creek
- 132, Highlands
- 130, Floyd's Fork
- 123, Northeast Jefferson
- 123, J-town
- 120, St. Matthews



0 1.25 2.5 5 Miles

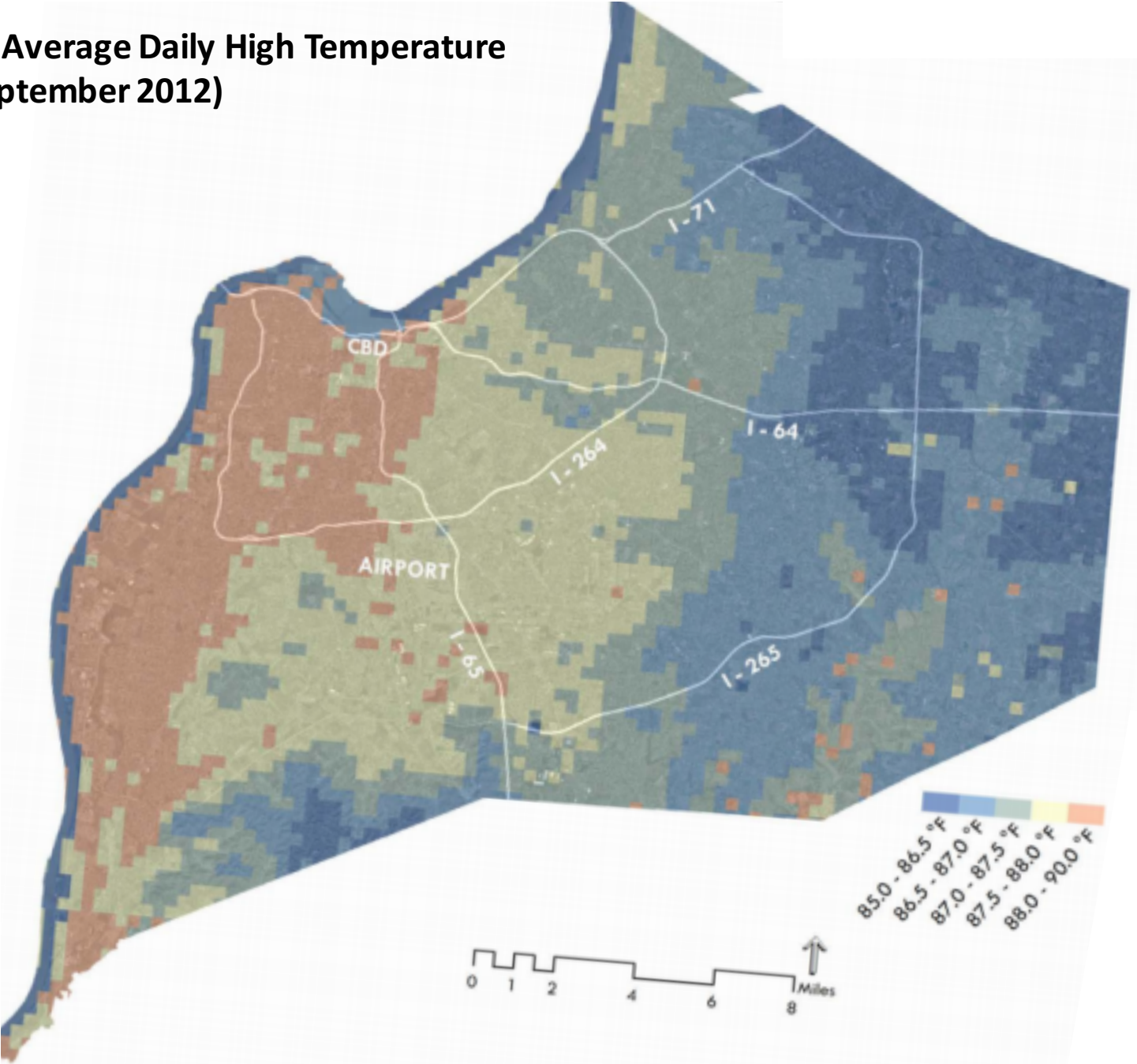


CENTER FOR HEALTH EQUITY
A Division of Public Health and Wellness



Data Source: 2006-2010 Louisville/Jefferson County Death Records
Age-Adjusted to 2000 standard population

Results - Average Daily High Temperature (May-September 2012)

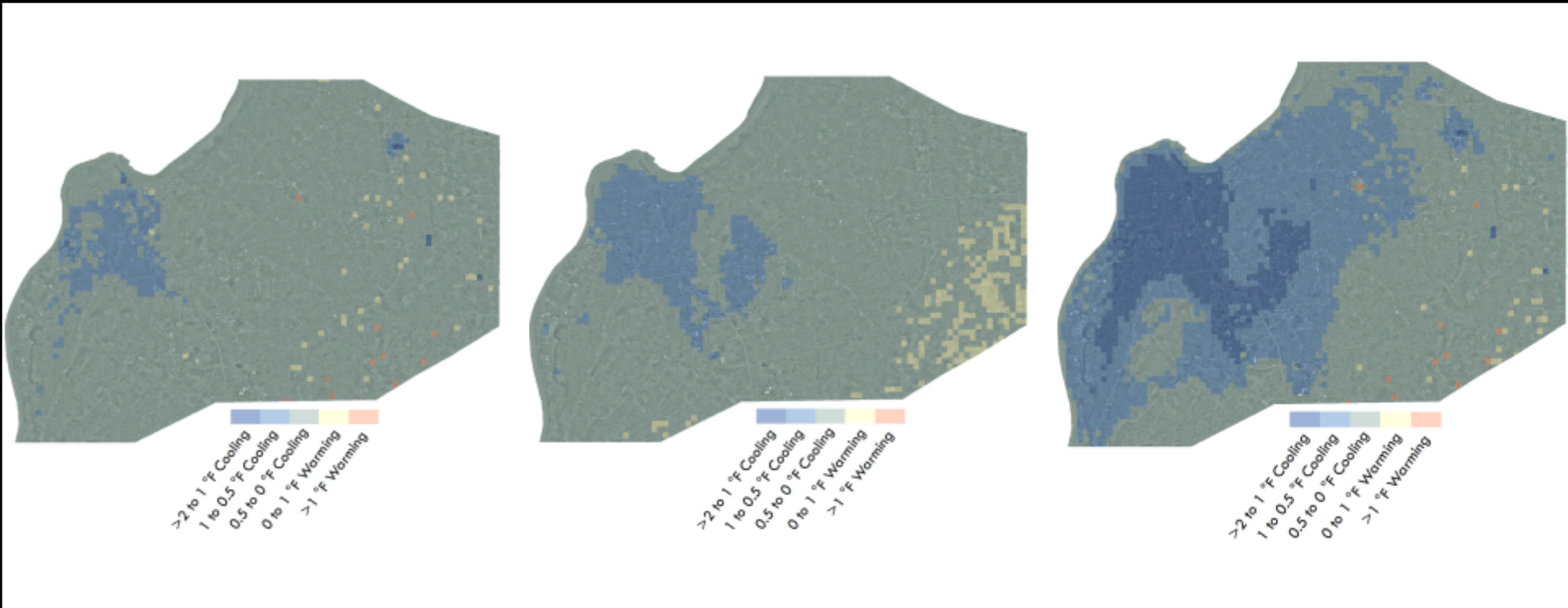


Urban Heat Island - Scenario Modeling Results

Green

Cool

All Combined



Cross Functional Workgroups – Internal Agencies

- Air Pollution District
- Codes and Regulations
- Forestry Division
- Community Services
- Construction Review
- Economic Development
- Emergency Services
- Health & Wellness
- Metro Parks
- Planning & Design
- Public Works
- Vacant & Public Properties



UHI Management Strategies

- Cool Roof Incentives
- Tree ordinance and forestry management plan
- Health preparedness
- Education
- Engagement

#cool502

GREENING | COOLING | CONSERVING

Thank you for riding TARC.

YOU'RE DOING YOUR PART TO

#cool502

Call 211 to find a cooling center near you. | www.louisvilleky.gov/uhi

Next Steps – Health, Equity, Resilience

100 RESILIENT CITIES
NETWORK MEMBER



100RESILIENTCITIES.ORG

PIONEERED BY THE ROCKEFELLER FOUNDATION

PIONEERED BY THE
ROCKEFELLER FOUNDATION

100



RESILIENT

CITIES

100 RESILIENT CITIES

THE FIRST

1



Thank you!

Contact:

Maria Koetter, Director of Sustainability

maria.koetter@louisvilleky.gov

502-574-4148

www.louisvilleky.gov/sustainability



OFFICE OF
SUSTAINABILITY
A DIVISION OF DEVELOP LOUISVILLE